

# Comfort-3

# Pro

# TREATMENT CHAIR / TABLE

ADVANCED FULLY-POWERED MEDICAL CHAIR / EXAMINATION TABLE WITH VERTICAL HEIGHT ADJUSTMENT

- Multi-purpose therapy chair designed for examinations, treatments and minor surgical operations such as proctology, endoscopy and outpatient surgery
- Facilitate the work of physicians and medical staff and enhance patient comfort and care
- Perfect ergonomic patient positioning at all times
- Highly customizable, modular construction



PROFESSIONAL SEATING SOLUTIONS BY

**Digiterm**<sup>®</sup>  
medical equipment

\* Chair in the photo involves some optional elements

# COMFORT-3 PRO TREATMENT CHAIR / EXAMINATION TABLE

## ART.-NR. 713C3P00

### Electronic adjustments

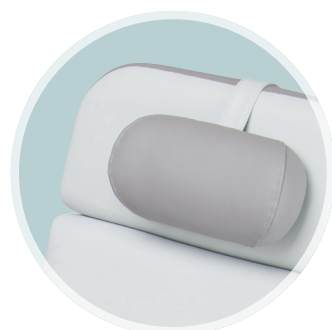
Multiple independent adjustment possibilities by 4 motors offer patient comfort, plus a reduction in work for staff.

### Easy-to-use 11 buttons handset

Automatic positioning



### Multifunctional examination table



### Exchangable upholstery

can be removed easily with a few movements for cleaning or maintenance.

### Removable parts

- head section
- footrest
- armrest

### Knee-elbow position



### Swivel and removable armrest

Armrest can be adjusted to all directions to achieve the most suitable and restful arm position.

Stainless steel side rails for quick assembly of different accessories



### Available optional accessories

- Central locking castor system
- Emergency foot control located on both side of chair
- Rechargeable battery back-up
- Leg support
- Longer legrest with motorised footrest adjustment
- Infusion bottle holder (IV pole)
- Push bar on the backrest
- Several upholstery colour combinations upon request

### General technical data

Seat height	63–85 cm	Thickness of upholstery	10 cm
Backrest adjusting range	80° (-15° under horizontal in Trendelenburg position)	Size of castors	4 x Ø 7.5 cm twin wheel castors with total lock
Seat tilt adjustment	15°	Weight of Chair	90 kg
Legrest adjustment	85°	Maximal load in seat and bed position	200 kg weight capacity
Manual footrest adjustment	10 cm	Maximal load of footrest	150 kg weight capacity
Size of upholstery	L 195 x W 65 x H 10 cm	Standard Power Supply	100-240 V AC, 50/60 Hz IPX6
Armrest size	L 60 x W 15 cm	Technical data of motors	24V DC, IPX6
Seat width	65 cm (optionally 55 or 60 cm)	Applied directive and standards	93/42/ EEC and harmonized standards
Length	195 cm (optionally 210 cm)	Frame colour	RAL 9001