

Comfort-3

Pro

TREATMENT CHAIR / TABLE

ADVANCED FULLY-POWERED MEDICAL CHAIR / EXAMINATION TABLE WITH VERTICAL HEIGHT ADJUSTMENT

- Multi-purpose therapy chair designed for examinations, intravenous treatments, PEMF and laser therapies, acupuncture, ultrasound guided biopsies, treatment of varicose and spider veins and other appropriate minimally invasive surgical interventions (proctology, dermatology, ENT, etc.)
- Facilitate the work of physicians and medical staff and enhance patient comfort and care
- Perfect ergonomic patient positioning at all times
- Highly customizable, modular construction



PROFESSIONAL SEATING SOLUTIONS BY

Digiterm[®]
medical equipment

* Chair in the photo involves some optional elements

COMFORT-3 PRO TREATMENT CHAIR / EXAMINATION TABLE

ART.-NR. 723C3P01

Electronic adjustments

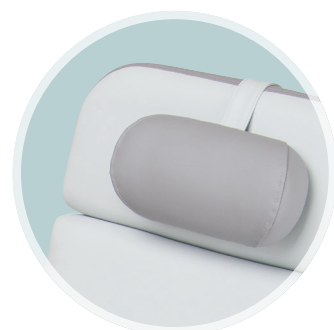
Multiple independent adjustment possibilities by 4 motors offer patient comfort, plus a reduction in work for staff.

Easy-to-use 11 buttons handset

Automatic positioning



Multifunctional examination table



Exchangable upholstery

can be removed easily with a few movements for cleaning or maintenance.

Removable parts

- head section
- footrest
- armrest

Knee-elbow position



Swivel and removable armrest

Armrest can be adjusted to all directions to achieve the most suitable and restful arm position.

Stainless steel side rails for quick assembly of different accessories



Available optional accessories

- Central locking castor system
- Emergency foot control located on both side of chair
- Rechargeable battery back-up
- Leg support
- Longer legrest with motorised footrest adjustment
- Infusion bottle holder (IV pole)
- Push bar on the backrest
- Several upholstery colour combinations upon request

General technical data

Seat height	63–85 cm	Thickness of upholstery	10 cm
Backrest adjusting range	80° (-15° under horizontal in Trendelenburg position)	Size of castors	4 x Ø 7.5 cm twin wheel castors with total lock
Seat tilt adjustment	15°	Weight of Chair	90 kg
Legrest adjustment	85°	Maximal load in seat and bed position	200 kg weight capacity
Manual footrest adjustment	10 cm	Maximal load of footrest	150 kg weight capacity
Size of upholstery	L 195 x W 65 x H 10 cm	Standard Power Supply	100-240 V AC, 50/60 Hz IPX6
Armrest size	L 60 x W 15 cm	Technical data of motors	24V DC, IPX6
Seat width	65 cm (optionally 55 or 60 cm)	Applied directive and standards	2017/745 (MDR) and harmonized standards
Length	195 cm (optionally 210 cm)	Frame colour	RAL 9001